

In the context of its commercial development, the MANUT-LM company is expanding its product offer to the logistics and supply chain sectors.

## MANUT-LM "LOGISTICS AND SUPPLY CHAIN" OFFER



### SOLUTIONS SUITABLE FOR THE MANUAL HANDLING OF LOADS IN THE LOGISTICS PROFESSIONS

Especially targeting the logistics and supply chain sectors, MANUT-LM is offering lifting and handling tools adapted to the load and product to be handled.

Designed to be integrated into all the environments of the different industrial sectors, these handling solutions via lifting tube are intended to remove the risks of MSDs and occupational health risks in work stations requiring the handling of loads.

Therefore, whether it is bins, crates, boxes, pallets, loads in racks, film-wrapped products or various other loads, the solutions developed by MANUT-LM will be able to be used in production sites, like in warehouses, from the end of the line to order preparation for delivery, including product sorting.

## A SOLUTION FOR EVERY STAGE AND FOR ALL TYPES OF LOADS!

With the MANUT-LM lifting solutions, manipulations at any height and pace are achieved quickly and very easily.

Therefore, in the area of logistics and the supply chain, MANUT-LM is offering a comprehensive range able to cover all handling operations:



### . HANDLING AND TRANSFERRING OF BOXES.

For placing and removing light "box" type loads on or from pallets at a significant pace, MANUT-LM is offering a new Light Lift Ergo range. Equipped with new "all-in-one" manual control handles, this new equipment offers greater ease of handling thanks to functions integrated directly into the tool, which make it a high performing, one-of-a-kind lifting system.



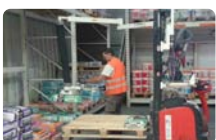
### . HANDLING BINS.

Concerning the logistical processes involving the handling of bins that can weigh up to 50kg, the MANUT-LM handling assistance solutions allow for the manipulation of loads completely calmly, while protecting the operator.



### . HANDLING PALLETS.

To ensure the supply of packaging and delivery work stations with pallets and protect the operators from risks associated with handling operations, Manut-LM has developed specific gripping systems designed to adapt to the technical constraints of production sites and manufacturing paces, all the while removing the occupational health risks.



### . HANDLING LOADS IN RACKS.

For preparing orders requiring the transporting of products and loads stored on a rack, Manut-LM offers lifting systems equipped with suction feet enabling "picking" without risk to the operators.



MANUT-LM manipulators are designed to assist manual material handling tasks, ensuring safety and productivity.

MANUT-LM



MANUT-LM manipulators are designed to assist manual material handling tasks, ensuring safety and productivity.

MANUT-LM

## MANUT-LM offers adapted solutions for the logistics sector, ensuring safety and productivity throughout the "logistics" chain.

Thanks to its offer of adapted solutions, MANUT-LM is able to optimise and make the work of operators safe throughout the product "logistics" chain, whatever its nature. Therefore, the tools designed by MANUT-LM are now able to not only make employees' work easier, but also increase productivity.

In the different operations associated with the logistics professions, the occupational health risks of manual tasks are often associated with a combination of factors: heavy or bulky loads, fast paces, cramped or hard to access work stations, which are dangerous in certain cases, access to bulky or awkward products to handle (height, availability, etc.), very significant surfaces to cover. Despite these constraints, the actions of operators must be executed correctly and accurately, as safely as possible.

As such, after an in-depth study of the different packaging, transport and order preparation and shipping processes, MANUT-LM has developed, in partnership with the companies involved, a comprehensive range of lifting solutions and manipulators capable of reducing the occupational health risks of manual operations, all the while ensuring complete safety for employees.

### The MANUT-LM handling solutions provide the logistics sector with very noticeable advantages:



- **Safety and comfort for the operator:**
  - Reduction in accidents and absenteeism, MSDs and fatigue.
  - Enhancement of the work station.
  - No contact with the product.
- **Independence at the work station:**
  - No weight limit for a single operator.
- **Economical solutions and quick integration:**
  - Easy to install, adopt and use.
- **Safety and respect of the load:**
  - Safe route, safe gripping/release, protected loads.

## TECHNICAL FOCUS ON THE MANUT-LM EQUIPMENT

The uniqueness of the equipment offered by MANUT-LM (manipulators, lifters, grippers, suction feet, etc.), comes from a solution relying on the creation of a vacuum obtained via an electrical pump, with load gripping achieved via suction or a mechanical tool. Therefore, the raising and lowering actions are undertaken via a control which creates a controlled release. These operations are ensured by a lifting tube which compresses or relaxes depending on the release activated and therefore the vacuum created.

To make them easy to use, the MANUT-LM manipulators benefit from several installation solutions adapted to the work area: either attached to a fixed post or installed under an overbraced jib crane with sliding rail, or even placed on a crane bridge system.

## MANUT-LM

*Design, manufacturing sale and installation of industrial lifting solutions.*

### French manufacturing for almost 30 years.

A French manufacturer, based in Ancenis (44) in the Nantes region, the MANUT-LM company benefits from nearly 30 years' experience and expertise in the design, manufacturing and distribution of industrial lifting solutions for assistance with manual handling. MANUT-LM employs a workforce of 30 employees spread over 4 areas of expertise, forming a flexible and responsive team of experts on a human scale.

All the handling assistance solutions are made internally in the MANUT-LM Ancenis workshops (mechanical and pneumatic design, mechanical welding and assembly) and all the stages are monitored and controlled. Depending on the requirements needed, the MANUT-LM technicians travel to every company to install and put the desired equipment into service. MANUT-LM then ensures the monitoring and development of the equipment via an inspection contract and the provision of spare parts as soon as possible. MANUT-LM supports industry giants like Nestlé, Valeo, Saint-Gobain, Bolloré, Beneteau, Skf, Bayer, Colgate, Haribo, LU, Lactalis, Fleury-Michon, Pasquier, Sodebo, Bonduelle, Henkel, L'Oréal, Clarins, Musée du Louvre, Banque de France, Lafarge, Philips, Nicoll, Caterpillar, Leroy Merlin, La Poste, La Plateforme du Bâtiment, Guerlain, etc., but also smaller ones like the middle-market companies, independent timber and metalworking specialists, etc.

### Manipulators for industrial lifting: greater comfort, increased productivity, better quality and fewer occupational health risks, to eliminate all the MSD problems for the company.

MANUT-LM sells manipulators, lifters, grippers and suction feet with a system based on the vacuum created by an electrical pump, with load gripping achieved either via a suction system or by a mechanical tool. The raising and lowering functions are carried out by a control which manages a release, the raising and lowering of the load is ensured by a lifting tube which is compressed or relaxed according to the release and therefore the vacuum. The majority of the manipulators are installed on a fixed post, either under a jib crane with a rail or on horizontal and vertical rail systems.

The MANUT-LM manipulators are able to transfer all kinds of loads for the operator effortlessly, weighing from 5 to 300kg (bags, drums, boxes, bins, containers, buckets, meatloaves, blocks of ham, wheels of cheese, wooden panels, metal sheets, etc.).

### A showroom over 60m<sup>2</sup>

In order to allow its customers and prospective customers to discover and test its solutions for industrial handling, MANUT-LM put in place, in 2015, within its very own Ancenis manufacturing workshops, a showroom over 60m<sup>2</sup>, which, in under a year, has become a real showcase for its expertise.

### A sales network throughout France and internationally.

With a sales representation throughout France, and an international network of stockists, MANUT-LM is currently a benchmark in the industry, with over 7,000 installations up and running throughout the world and over 1,500 personalised installations.

### Business areas:

-- WOODWORKING INDUSTRY - CHEMICAL/PHARMACEUTICAL INDUSTRY - FOOD INDUSTRY - BUILDING/CONSTRUCTION INDUSTRY - INDUSTRIAL SECTOR - LOGISTICS - WINES & SPIRITS, ETC...

. Société : MANUT-LM  
. Contact : Eric GRUAU / Président  
. Adresse : 149, rue Gustave Eiffel- CS 600 44 - 44152 ANCENIS CEDEX  
. Téléphone : Tél. : (33) 240 963 939 / Fax. : (33) 240 831 078  
. Web : [www.manutlm.com](http://www.manutlm.com) / [eric.gruau@manutlm.com](mailto:eric.gruau@manutlm.com)